



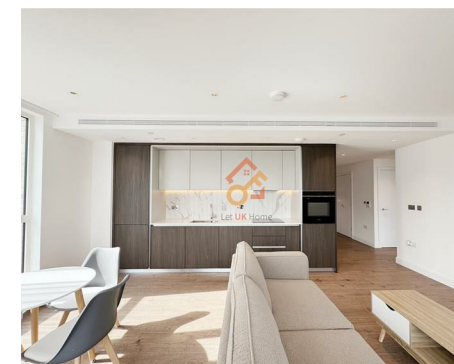
Let **UK** Home

2 Bedrooms

Flat

Located in London

£3,800 Per Month



info@letukhome.co.uk

<https://www.letukhome.co.uk/>

01795 358 886



9 Gasholder Place London

SE11 5BB



Let UK Home are excited to offer this spectacular two bedroom in the heart of Oval Village in Vauxhall.

This property comprises a large bright open plan kitchen and living room leading to a large private balcony with great views, two double bedrooms(master with fitted wardrobes and en-suite), a large family sized bathroom and ample storage.

Residents of this exceptional development will have exclusive use of the spa, indoor swimming pool, sauna, gymnasium and private screening room. Furthermore, residents will also benefit from a concierge and an unrivalled selection of shops, bars, restaurants, leisure facilities and beautiful landscaped courtyards.

The apartment is surrounded by three subway lines. It is within walking distance of three subway stations, Vauxhall, Oval and Kennington, and two subway lines, Victoria Line and Northern Line, which can lead to all important stations in central London.

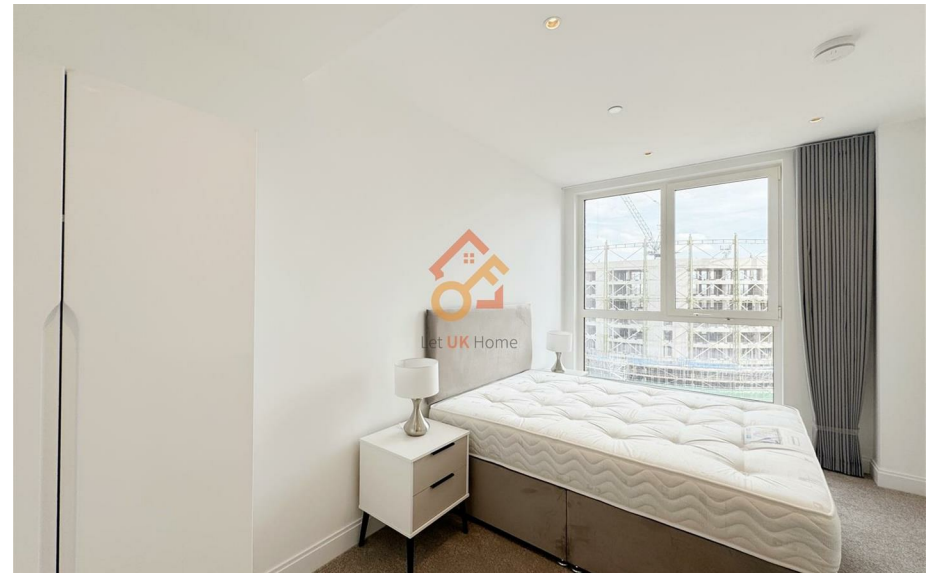
The development is surrounded by prestigious universities and has excellent educational resources. From the development, walking will take you to Chelsea College of Arts and London College of Communication (LCC), and by subway or bus you can quickly reach several renowned universities including London South Bank University (LSBU), London School of Economics and Political Science (LSE), King's College London (KCL), University College London (UCL), University of Westminster, and Imperial College London (IC).

9 Gasholder Place London

£3,800 Per Month



- 9th Floor
- Swimming Pool
- 24h Security
- Residents Lounge
- EPC Rating: B
- The Gym
- Cinema & Game Room
- Concierge Service
- Co-working Space





Let **UK** Home

3F 2 Eastbourne Terrace
 Paddington
 London
 W2 6LG

01795 358 886

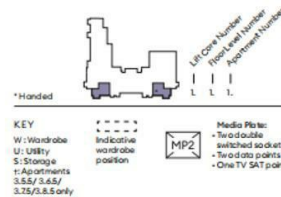
info@letukhome.co.uk



Living / Kitchen / Dining	5.72 x 4.55m	18'7" x 14'9"
Bedroom 1	2.75 x 3.0m	9'0" x 9'10"
Bedroom 2	2.75 x 4.12m	9'0" x 13'6"
Balcony	4.0 x 1.75m	13'1" x 5'9"
Total Net Internal Area	75.1 sq m	808 sq ft

Measurements shown for use for comparison of measurements only. Exact layout and sizes may vary. All measurements are approximate and are for general guidance purposes only and whilst every care has been taken to ensure their accuracy, they should not be relied upon and potential buyers/tenants are advised to recheck the measurements.

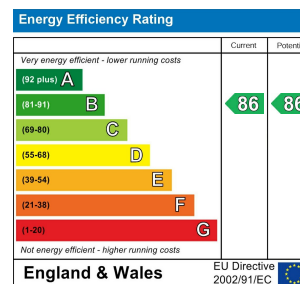
92



Council Tax Band: F

Local Authority:

Agents Note: Whilst every care has been taken to prepare these particulars, they are for guidance purposes only. All measurements are approximate and are for general guidance purposes only and whilst every care has been taken to ensure their accuracy, they should not be relied upon and potential buyers/tenants are advised to recheck the measurements.



<https://www.letukhome.co.uk/>